



Learning to Read Music Notes

THE BASICS

Level One

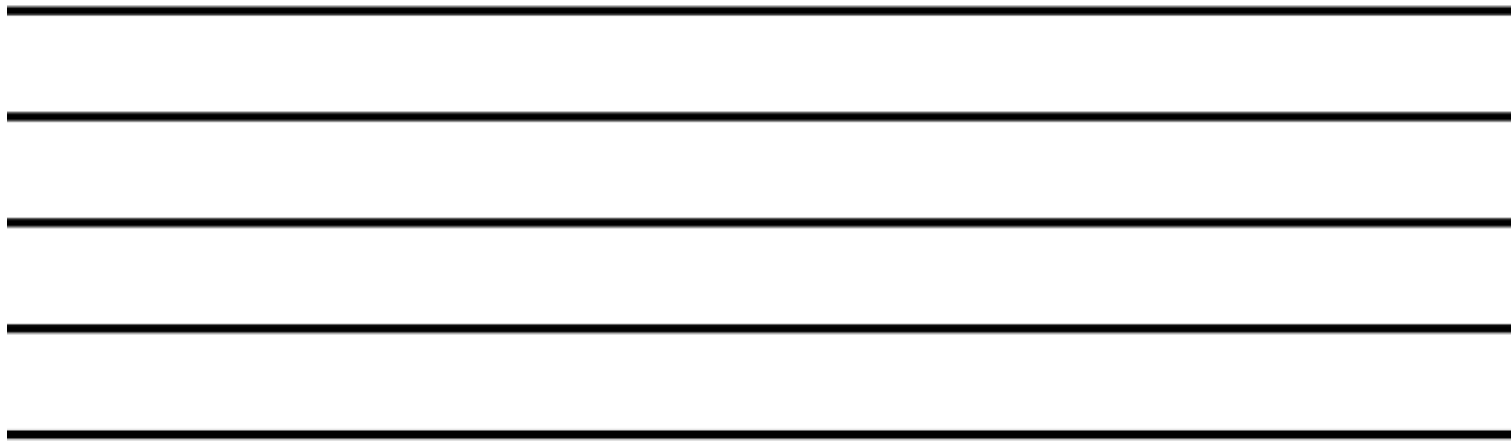
The Basics

- **Musical Alphabet**
- **The Staff**
- **Lines and Spaces on the Staff**
- **Treble Clef**
- **Bass Clef**
- **10 Music Notes**

Musical Alphabet

A B C D E F G

STAFF



**The staff is where music notes are written.
Each line and space has a name.**

STAFF

5		4
4		3
3		2
2		1
1		

LINES 12345

SPACES 1234

Treble Clef



The Treble Clef indicates right hand reading. This staff has the higher notes, middle C and above.

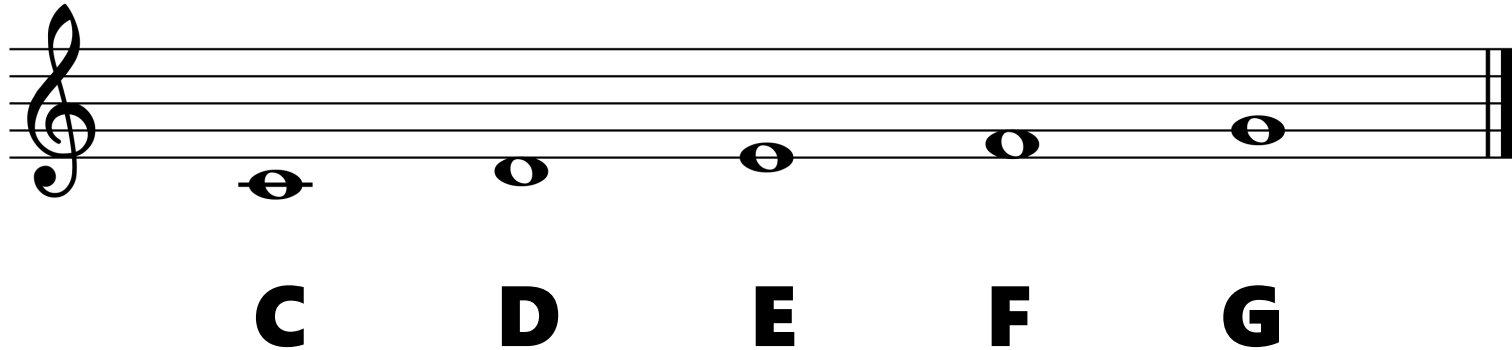


Treble Clef aka G Clef

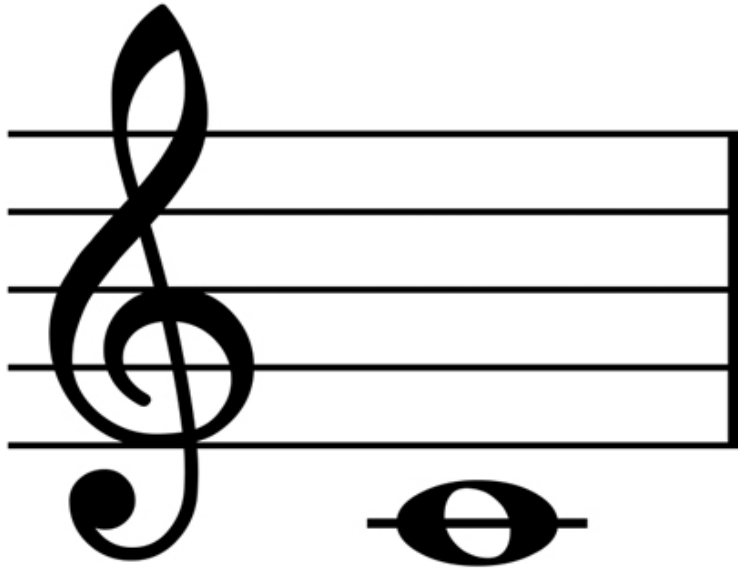


Notice the swirl around the G line

First Five Notes



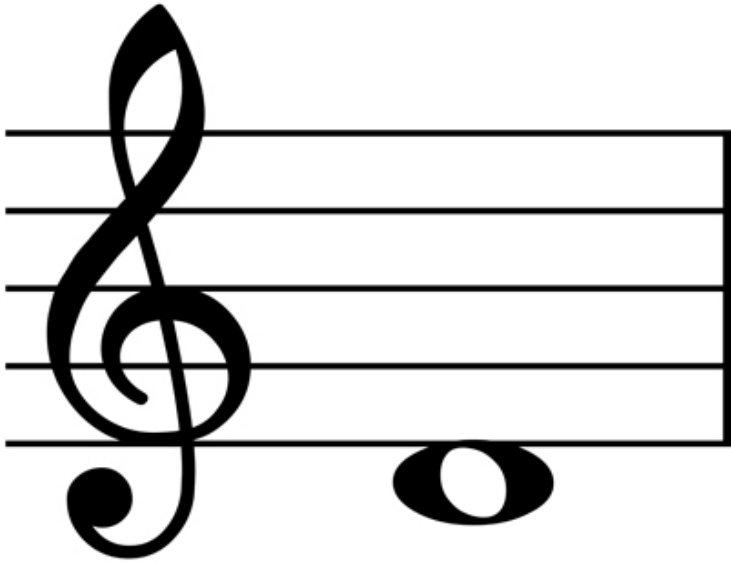
Middle C



Characteristics of Middle C:

1. C floats below the staff.
2. C has a short line through the middle. *(The short line is called a ledger line.)*

D



Characteristics of D:

1. D is below the Treble staff.
2. The top of D touches the first line of staff.

Notes on the Treble Clef Staff

F ly 5

D oes 4

B ird 3

G ood 2

E very 1

E 4

C 3

A 2

F 1

LINES: EGBDF

SPACES: FACE

Memorize Space Names



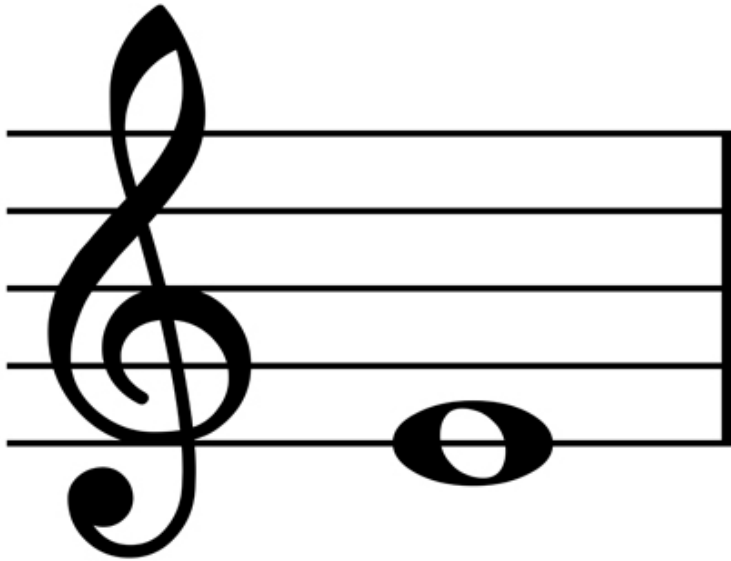
FACE

Memorize the Line Notes



E G B D F

E

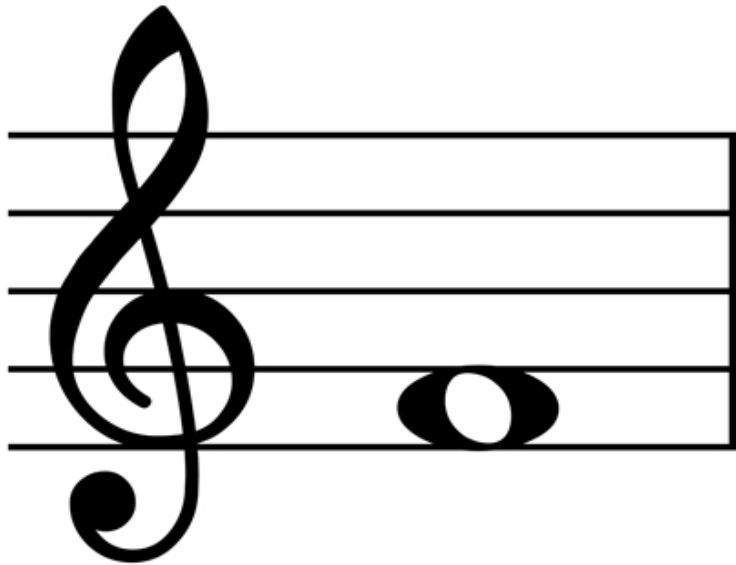


5 F
4 D
3 B
2 G
1 E

Characteristics of E:

1. E is the on the first line.
2. The line goes through the middle. There is a line above, but no line below.

F



4 E
3 C
2 A
1 F

Characteristics of F

1. F is a space note on the Treble staff, the center of the note is empty.
2. F is on the first space.

FACE

G



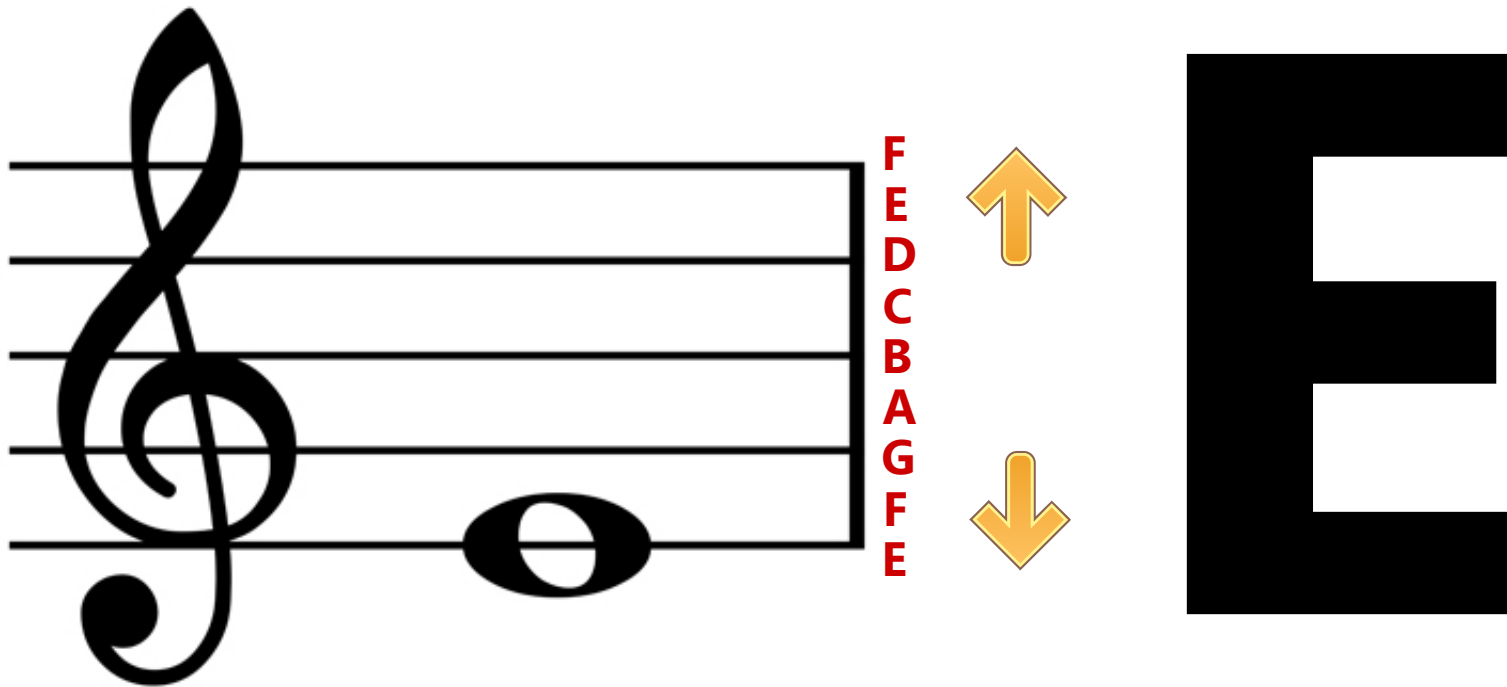
Characteristics of G:

1. G is on the 2nd line.
2. **Notice** that the line G is on goes through the center of the swirl on the G Clef. The other name for the Treble Clef is G, this is how the G Clef gets its name.

Second Method for Memorizing Notes

The **BOTTOM** line is E.

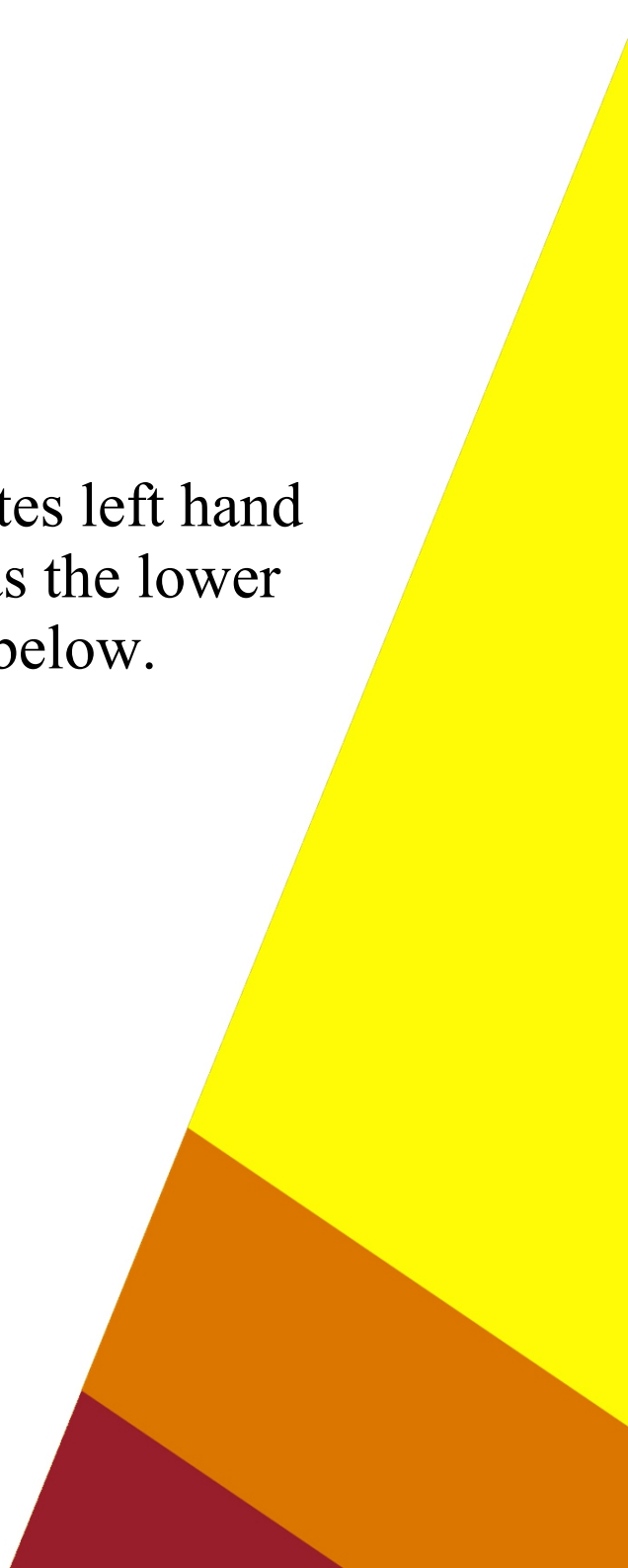
From E going up, the notes go in alphabetical order forwards. EFGABCDEF G
From E going down, the notes go in alphabetical order backwards. EDCBAGFEDC



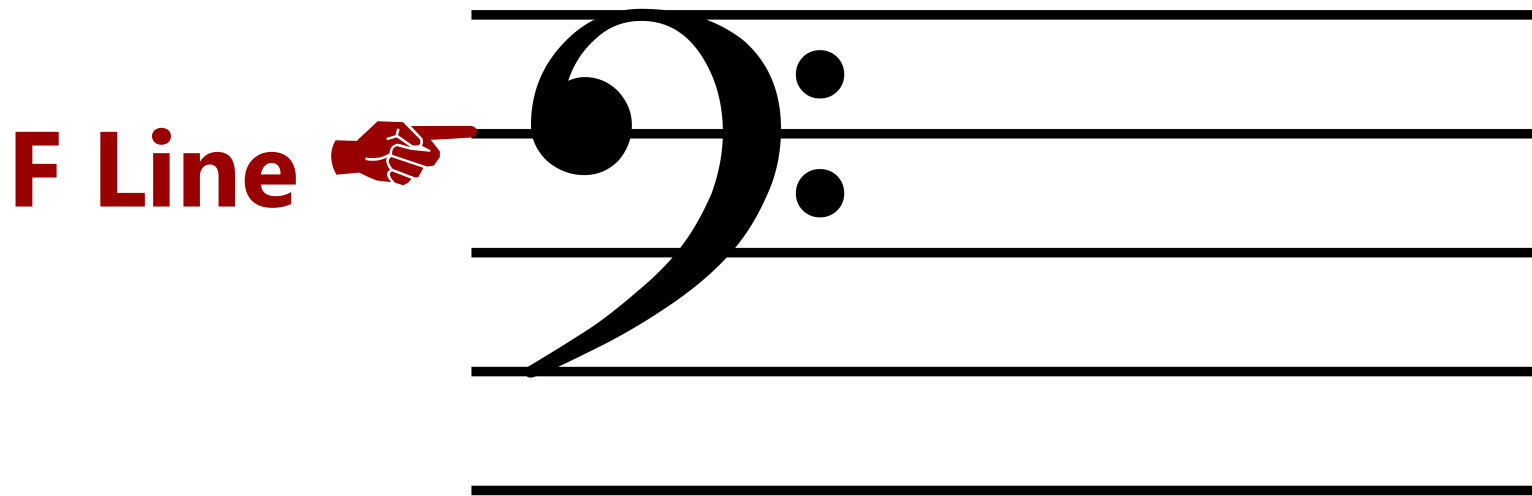
Bass Clef



- The Bass Clef indicates left hand reading. This staff has the lower notes, middle C and below.

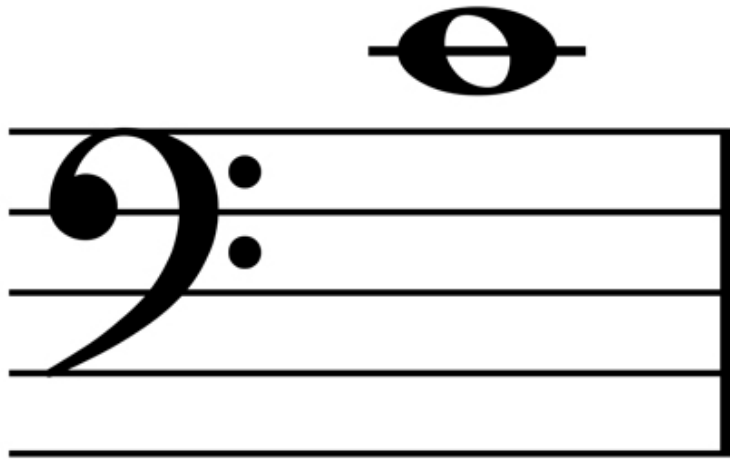


Bass Clef aka F Clef



**The dot of the BASS Clef is on the F Line.
The dots on the right side
are above and below the F Line.**

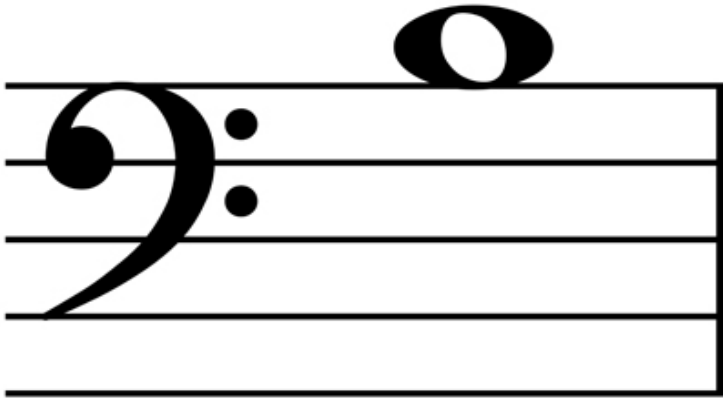
Middle C – Bass Clef



Characteristics of C:

1. Bass Middle C is floating above the Bass staff.
2. There is a short line through the middle of C. (*The short line is called a ledger line.*)

B-Bass Clef



Characteristics of B

1. B is above the Bass Clef.
2. B is sitting right on top of the line. The bottom touches the top line.

Bass Clef Staff

Animals 5

Fight 4

Dogs 3

Big 2

Great 1

Grass 4

Eat 3

Cows 2

All 1

LINES: GBDFA

SPACES: ACEG

Memorize Space Notes



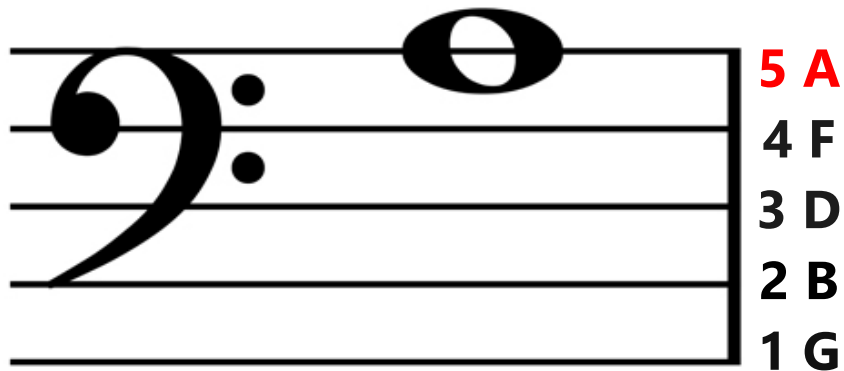
ACEG

Memorize Line Notes



GBDFA

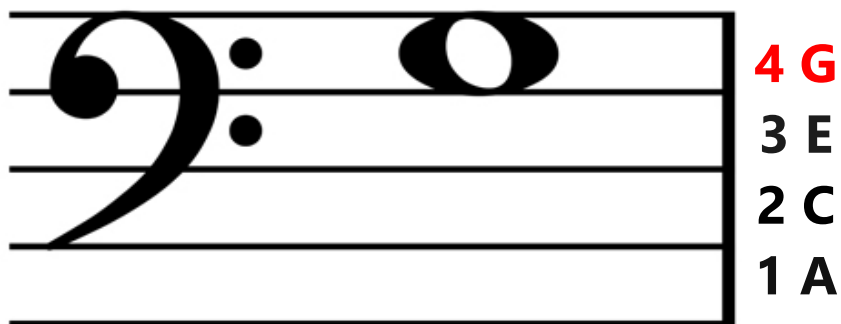
A-Bass Clef



Characteristics of D

1. A on the top line of the Bass Clef. The line goes through the middle of the note.
2. There is a line below A, but not above.

G – Bass Clef



Characteristics of G

1. G is on the top space and is empty in the middle.
2. The top dot of the Bass Clef is G and it is in the same space as the note G.

F – Bass Clef



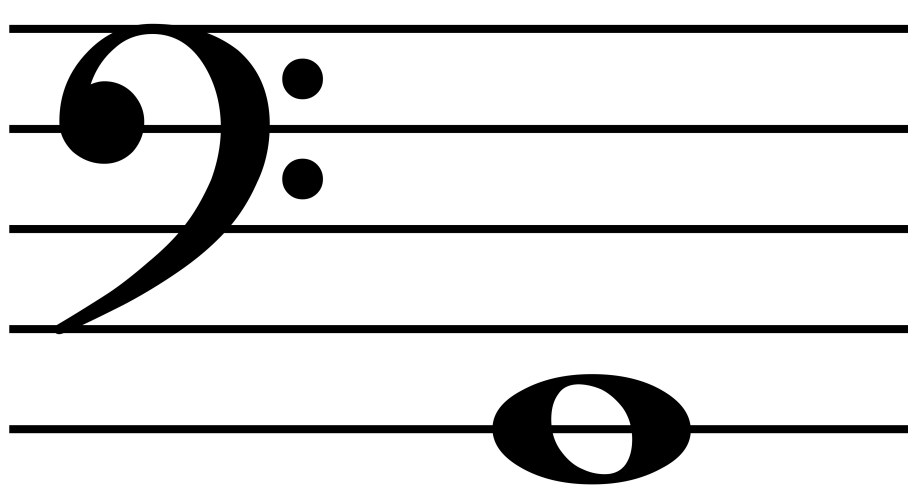
Characteristics of F

1. F is on the 4th line.
2. **Notice** the F line is between the two dots of the Bass Clef. The dot on the front of the Bass Clef is on the F line.

SECOND METHOD FOR MEMORIZING

The **BOTTOM** line is G.

From E going up, the notes go in alphabetical order forwards. GABCEDFGA
From E going down, the notes go in alphabetical order backwards. GFEDCBAG



A
G
F
E
D
C
B
A
G



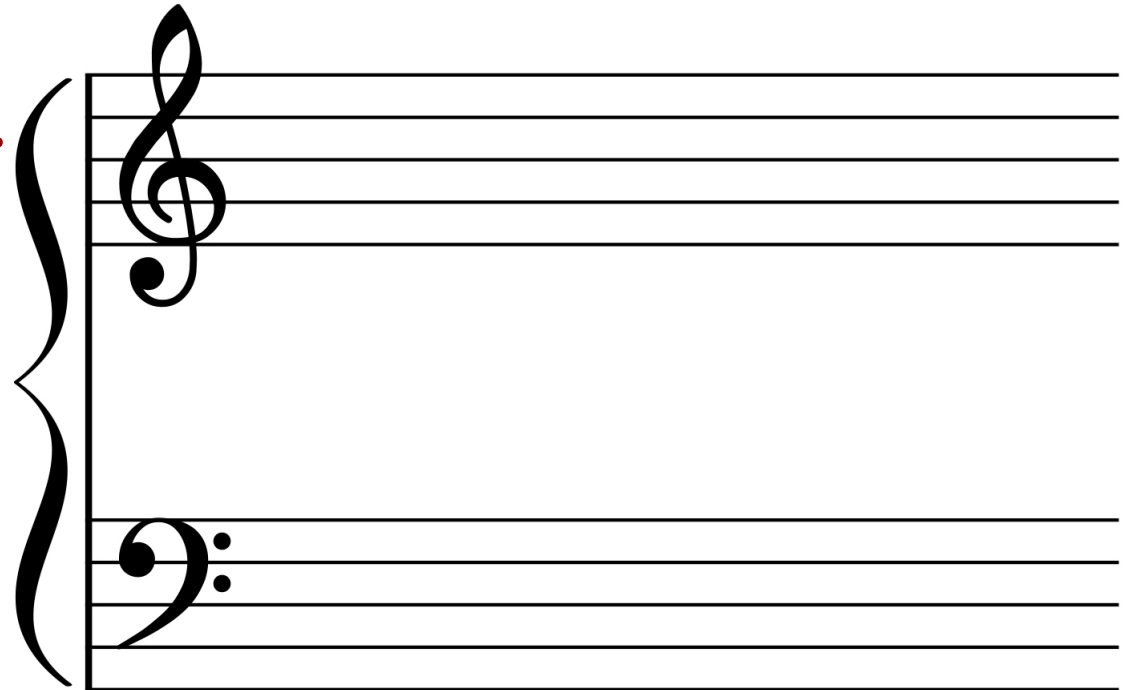
G

Grand Staff

To learn how to read notes on the piano you will be reading from the grand staff. There are two staves joined together with a bar line and a bracket.

Right Hand 

Left Hand 



**You are now ready
for
LEVEL TWO!**

www.cynthiaalistudios.com

Copyright © 2019 Cynthia Ali Studios LLC. All Rights Reserved. Copying by any means is not permitted.